

MARS CONTAINER SHOOTING RANGE



Modular Armored
Range System

GISS container shooting ranges are specially designed systems of mobile ballistic modules. They enable the construction of highly specialised training facilities anywhere, designed for shooting and tactical training of all uniformed services as well as civilians.

These facilities allow the organisation of a range of training sessions at distances from 5 to 200 metres from a fixed and variable line of fire. They have from two to eight shooting positions, which makes it possible to conduct individual, pair or group training.



V01/02.2021



Container shooting range

What is crucial with this type of training is the complete safety of the shooters. Both in the initial phase and with personnel already possessing advanced tactical and firearms skills, this is an extremely important element. It gives freedom to both trainees and instructors to organise and carry out activities. This is why we have placed great emphasis on safety in our container shooting ranges, using appropriate technology:

- The entire steel core is made of armoured or wear-resistant steel with a minimum thickness of 10mm to ensure complete safety.
- The training facility is fully protected with tongue and groove anti-bullet panels, min. 50mm thick, which protect against steel elements from bullets and steel core.
- Clear and permanent marking of permitted and prohibited zones is provided.
- We have a certificate confirming that the ballistic panel can withstand the firing of 1,500 bullets into a 300mm diameter circle from a distance of 3m.
- We have certificates confirming that the steel used is resistant to a 12-fold firing of a 7.62x54Rmm calibre bullet with an LPS projectile with an initial energy of approx. 3600J into a single point from a distance of 6m.

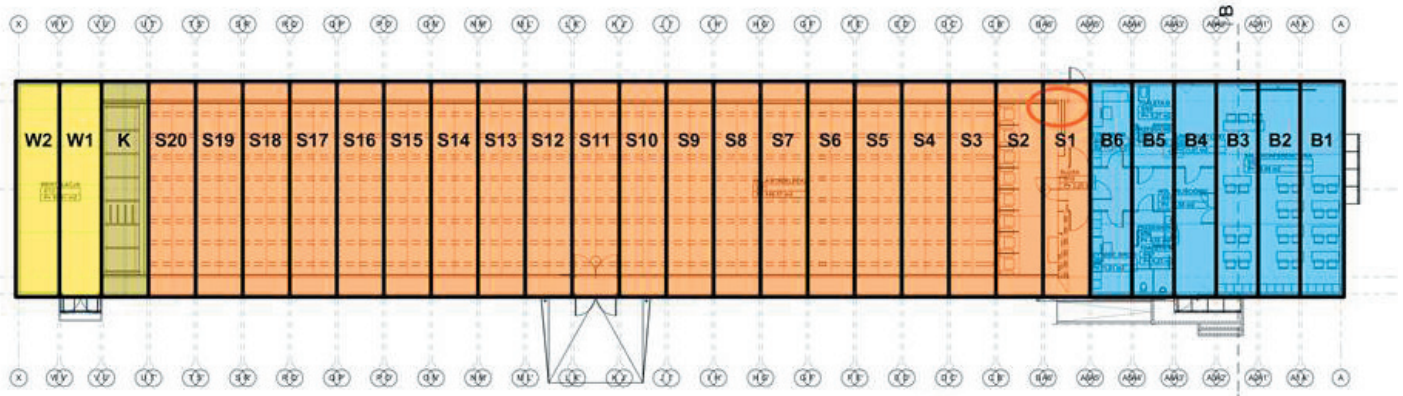
Due to the use of standard equipment and live ammunition in training, the level of real training increases, concentration and confidence in the acquired skills increases. Training support systems installed inside enable comprehensive analysis of training, identification of individual and group mistakes, which makes it possible to avoid them in the future both during training and in combat operations.

Systems that can be used to make training more interesting:

- Artificial smoke system, allowing training in low visibility conditions.
- Audio system - generating sounds of the battlefield.
- Monitoring system of exercising personnel.
- System of specialised simulation lighting.
- Movable targets on shield-pipes.
- System of lifts and turnstiles, or steel targets integrated in the system.
- System of integrated handrails.
- System of bullet walls with connectors allowing creating rooms and conducting tactical training.
- Multimedia shooting trainer.



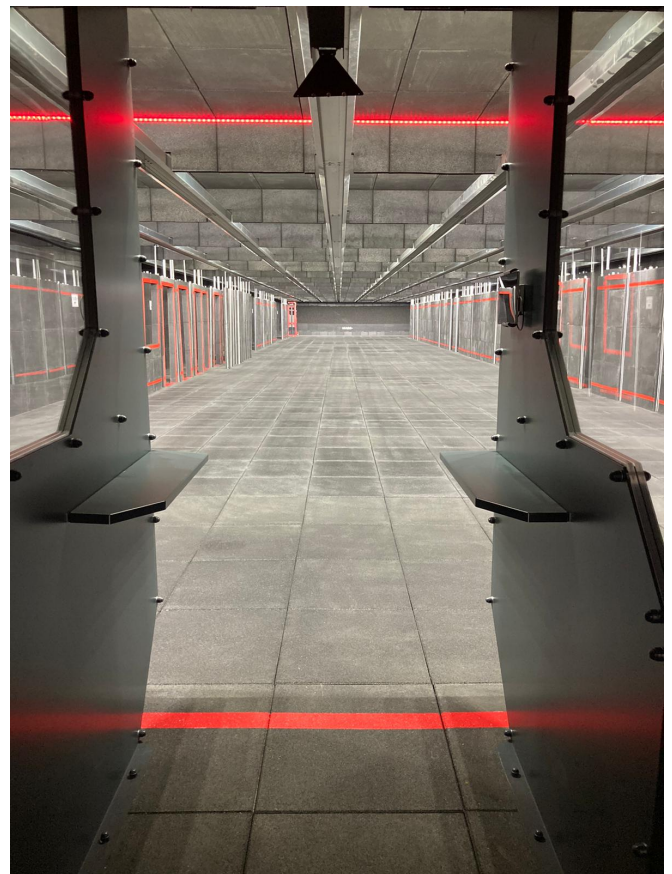
Apart from the ballistic modules, the facility may also be equipped with modules supporting the functioning of the whole centre, i.e.: training, office, social, logistic and communication modules. These modules may include such rooms as: shooting control station, weapon cleaning room, toilet, training room, waiting room, cloakroom or medical point.



W2-W1- ventilation containers; K - bullet trap container, S20-S1- shooting hall containers; B5-B1 - office containers

What makes our facility special?

- The facility is tailored to the individual needs of the user.
- We make a project according to your requirements.
- Professional construction of the facility in a short period of time.
- Installation of the aforementioned training support systems.
- Possibility of constructing the facility in any place indicated by the user.
- Long-term guarantee for the facilities built by us.
- Warranty and post-warranty service.
- Service and spare parts supply.
- Maintenance and service training.
- Experienced instructors.
- Possibility of creating "killing house" type premises.
- Possibility to build a facility from 2 to 8 stands.
- Possibility of constructing a facility with firing axis from 5 to 200 metres.
- Possibility to build a main bullet trap with granulate or other solutions such as: blocks or only covered with panels for shooting with 9mm bullets.
- Modular construction, allowing to design a facility of any width (2-8 stands) and length (5-200 m firing axis).
- Possibility to use live ammunition.
 - 9mm Parabellum
 - 5,56 x 45mm SS109
 - 7,62 x 51mm NATO
 - 7,62 x 54R
 - 12/70.





Modular Armored
Range System



- Possibility to install training support systems (e.g. audio smoke, monitoring systems, etc.).
- In the case of equipping the facility with portable bullet walls, the possibility of conducting fire in the range of 180° even to 360°.
- Core made of the highest quality armoured or wear-resistant steel.
- Possibility of constructing the facility with the use of ballistic blocks in order to improve the comfort of use and increase the strength of side walls when firing in 3 directions.
- The use of a high quality ventilation system ensuring comfort of the shooting range (min. 20 exchanges /1h).
- With demanding shooting ranges and large surface areas we use air transfer inside the shooting range, but it is also possible to install ducts on the roof of the shooting range.
- Possibility of constructing a KH or SH type shooting range with a mobile set of ballistic walls connected with connectors of the same ballistic strength as the walls which ensure a full safety for shooting inside.
- It is possible to dismantle the shooting range and install it in another place.

